

Developers :



CHORDIA'S
A Tradition of Trust Since 1990's

Office Address: 'Chordia Enclave' , 29, Janpath, Shyam Nagar, Jaipur- 302019
T: +91 141 4043152, 4022981 M: +91 98290 35757, 98290 47979, 97822 70444

Disclaimer : Builders and Developers reserve the right to change any design and specification of the building without any prior notice and information. This brochure is for illustration purpose only and it cannot be in any way treated as a legal document. All information, specifications, plans, material and visual representations contained in the brochure, model is sample flat are subject to change from time to time by the developer and /or the competent authorities and shall not form part of the offer or contract.

Design Syndicate 98291 17986



PARK & RETREAT
villas that spell out royalty



we all have a story to tell. Your home is where you share the story of who you are

Welcome to

PARK RETREAT
villas that spell out royalty

Walk in to an atmosphere that engages your senses - instantly. Feel welcome amidst the smartly designed interiors.
Picture a space crafted to the last detail, waiting for you to be explored with open arms.

“ treat yourself to a
visual surprise that unfolds every time
you blink ”





enter **celestial bliss** that
combines the best of **natural beauty**
and impeccable planning

Fields of swaying grain rush past you, as you drive through the picture-perfect, tree-lined highway to Park Retreat. Flanked by spectacular beauty all around, these villas resound with the calls of different species of birds. Step inside and take in the sight of tranquility amid dark green clusters and the endless blue sky.

PARK RETREAT
villas that spell out royalty

the Grand Entrance



*Rejoice.
Loosen up.
Settle down.*

Get used to your
king-sized habitat

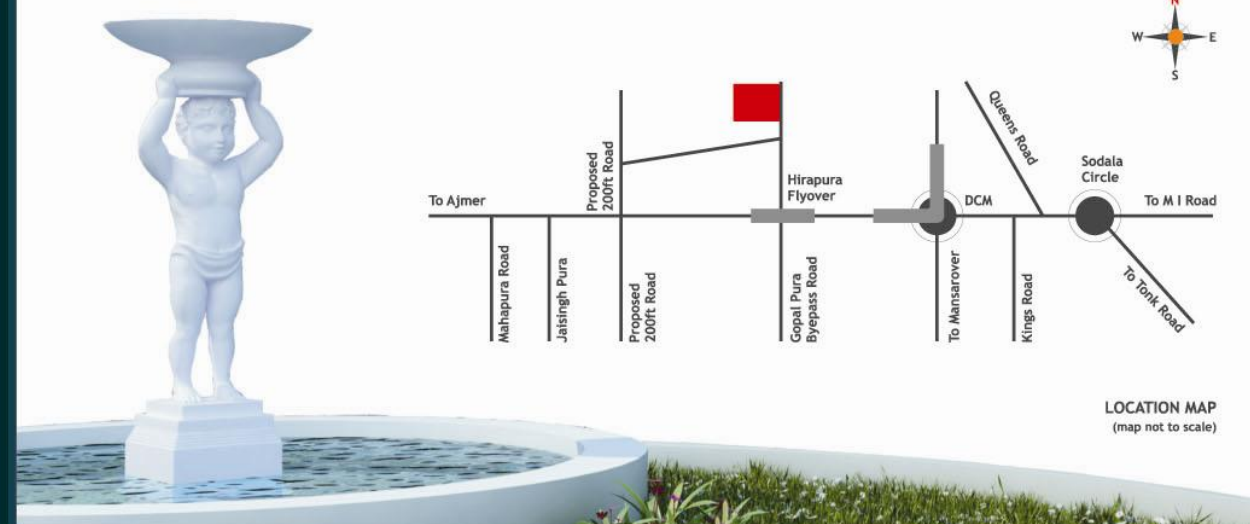
Welcome to a land that's off the city-life grid and yet close to every convenience. Trade your ringtone for birdcalls, for this is a place where serenity and peace reign supreme. Home to 66 massive independent villas, Park Retreat aren't just rooms but generous and well-appointed spaces, where you can connect with nature in all its glory. Moreover, the roomy interiors and high ceilings enhance the sense of space. It is indeed the most coveted address, especially with Rajasthan's Premier Sports Lifestyle Apartments as its neighbor. Come, take advantage!



Project Overview

- | Project Overview | |
|----------------------------------------------------|----------------------------------------------------------------------------------------|
| ▪ 66 Premium independent villas | ▪ Aesthetically & spaciouly designed villas with modern elevation |
| ▪ 5 BHK Premium lifestyle villas | ▪ Service office for services of electrician, plumber and gardener |
| ▪ Type - 4 & 5 BHK East & West Facing | ▪ All modern facilities and services for comfortable, luxurious and hassle free living |
| ▪ Jaipur development authority approved project | ▪ Huge Lush Green Landscaped areas |
| ▪ Vastu friendly layout of township and villas | ▪ Roof Top Terrace Garden |
| ▪ Around 53% open and green area | |
| ▪ Convenience commercial market & open car parking | |

Site Address : Park Retreat, Chordia City, Near Kamla Nehru Nagar, Ajmer Road, Jaipur



LOCATION MAP
(map not to scale)



25'x52' East Facing



exclusivity, peace

Located next to the most happening hub of Kamla Nehru Nagar, Park Retreat is an iconic development that will be the pride of Jaipur's residential area and envy for the rest. This cutting edge architectural marvel showcases an eclectic mix of everlasting and contemporary ideas, while its interiors feature a rich palette of colours and textures. This magnificent retreat makes a statement that is strong, progressive and liberal.

PARK & RETREAT
 villas that spell out royalty

an architectural design that
 epitomizes comfort, luxury and grace

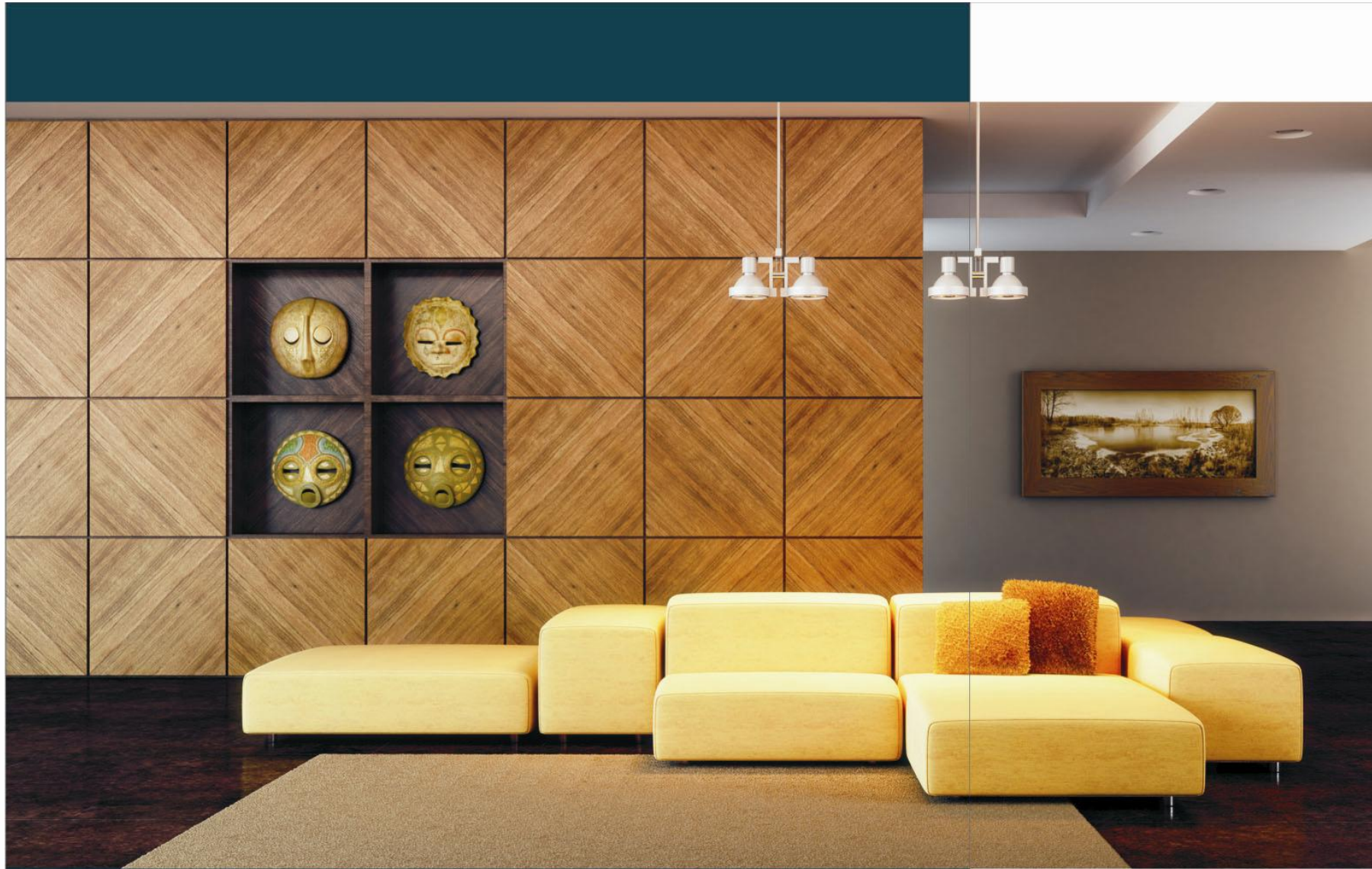


25'x52' West Facing



PARK RETREAT
villas that spell out royalty

Villas at Park Retreat are not all about materialistic pleasures, they are about creating a warm and friendly space that offers every conceivable comfort to you as well as to your future generations. Precisely why, special emphasis has been laid on bringing nature into your home. With Jogging Tracks, Children's Play Area and Senior Citizen's Corner, it's an environment brimming with good life.



living room

the living room designed for lounging

Smart seating that's ideal for socializing, a coffee table with plenty of storage, cozy textiles, curtains and table lamps create a relaxed mood in this spacious living room. You'll be happy to spend hours sitting on, discussing world peace or what toppings to get on the pizza.



spacious living room



bedroom

a bedroom fit for beauty sleep

A good night's sleep starts with the soft stuff you snuggle up in. Like pillows that fit the way you sleep, whether it's on your back or your side. What's more, you'll want to hit the snooze button over and over again in this calm, comfortable bedroom filled with soft bed linens and fluffy pillows.



lavish bedroom

make their bedroom the best playground

Kid's Room



Modular Kitchen

the perfect recipe for any occasion

specifications

PROJECT FEATURES

- RCC composite structure with Brick Masonry, Cement Plastering and POP finish.
- Adequate Light on Road side.
- Water Harvesting.
- Green and Peaceful Environment.
- Security Services.
- Boring for water supply.

VILLA FEATURES

- Italian flooring tile / fine marble flooring in Drawing & Dining.
- POP finish on Walls and Ceiling with Cornices.
- Plastic Paint on Walls and Ceiling.
- Overhead and Underground Water Tanks with Pump in each Villa.
- Garden Area in Front side of Villa.
- Wooden Flooring in master Bedroom.
- Dedicated utility area in Rear side of each Villa.
- T.V. & Telephone point.

WOOD WORK

- Tough ISI Mark 30 MM Flush Doors duly painted.
- Well designed Main Door of 35 MM thickness with Magic Eye.
- Brass fittings of good quality on Doors.
- Windows of UPVC / Aluminum / Wooden.

KITCHEN

- Modular Kitchen
- Black Granite Working Counter with SS Sink.
- 2' Tile Dadoing above the counter.
- Concealed Copper Tubing for Gas Line.
- Hot & Cold mixer.

TOILETS

- Ceramic Tiles in toilets upto 7' height on walls.
- Anti Skid Ceramic Tiles on Flooring.
- Premium Grade C.P. Fittings of Marc / Jaguar or equivalent make.
- Counter washbasin in 2 Toilets.
- Sanitary Wares of Cera / Hindware.

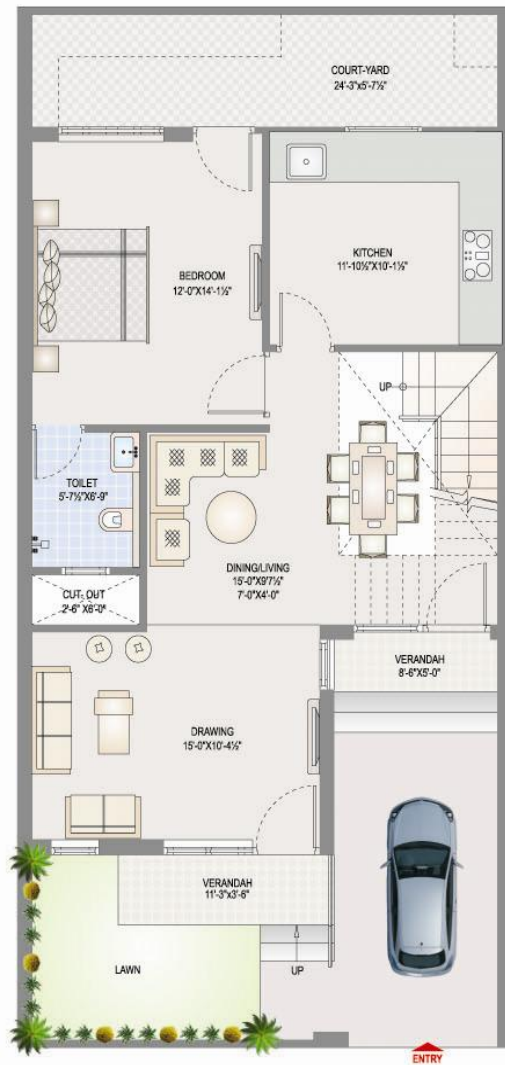
ELECTRICAL

- Modern Electrical System with concealed ISI grade Copper. Wiring in conduit of Finolex / RR / Indo-Asian make.
- Premium quality Modular Switches.
- MCB and DB's as per ISI standard.
- Provision for Inverters in each Villa.
- T.V / Telephone / A.C. / Cooler points at appropriate places.

lifestyle advantages

GROUND FLOOR PLAN

5 BHK Villa Layout

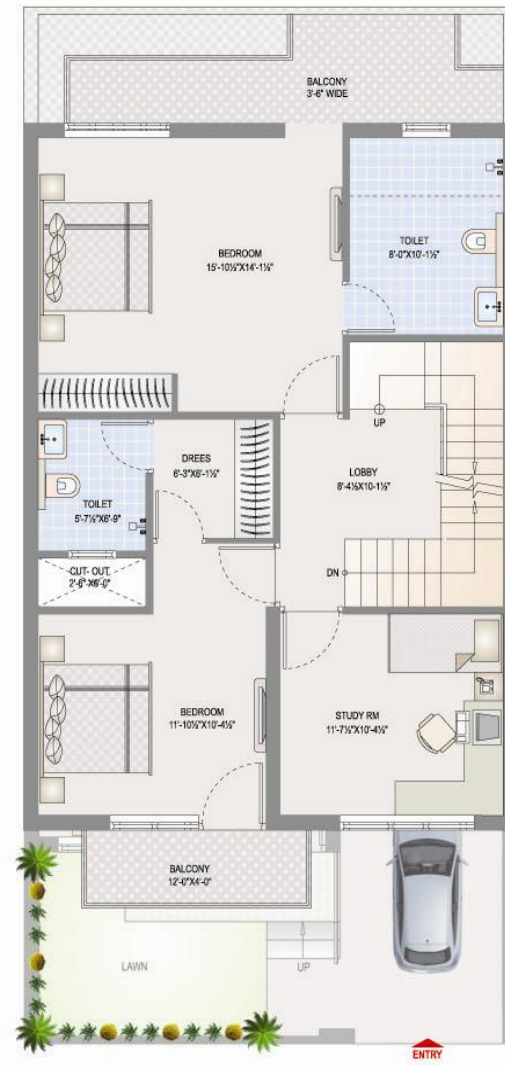


GROUND FLOOR PLAN

Villa Size : 25' x 52'
Saleable Area = 957.00 sq.ft.

FIRST FLOOR PLAN

5 BHK Villa Layout



FIRST FLOOR PLAN

Villa Size : 25' x 52'
Saleable Area = 1055.00 sq.ft.

SECOND FLOOR PLAN

5 BHK Villa Layout



SECOND FLOOR PLAN

Villa Size : 25' x 52'
Saleable Area = 605.00 sq.ft.



“ For sheer luxury surrounded by Nature's bounty,
for a life more beautiful than you could ever have imagined ”



the GROUP

CHORDIA'S is a Jaipur based renowned family owned real estate company. Two decades since its inception, it has created many remarkable landmarks across the city. The group owes this success to its competitive price, excellent service and strong ethics. CHORDIA'S pioneered in developing Jaipur's first township with Chordia City.

The company's founder, Mr. Vinay Chordia, started his professional career as a highly skilled jeweller and then forayed into the world of real estate in the mid 90's. It's his courage, hard work and dedication that has built a strong reputation and taken the company to greater heights. Together with his sons the company is all set to create countless milestones, like never before.

“an economist's guess is liable to be
as good as anybody else's. Business is in itself a power.”

Site Plan of
Park Retreat with Landscaping

